



**ULTRATECH**  
INTERNATIONAL, INC

# Ultra-Containment Wall® Assembly Instructions

Sold by  
**ONE**  
CLARION



1. Unpack walls and corners.
2. Inspect for any shipping damage and missing parts.



3. Set up walls and corners in area requiring spill containment.



4. Insert pin at each wall/corner connection.
5. Set up all walls and corners. This will insure the correct spacing.



6. Remove walls on side that frac tank/tanker truck/other vehicle will be rolled through.



7. Unroll liner and place over walls.



8. Walk around the containment area so that the liner lays close to the Containment Walls.



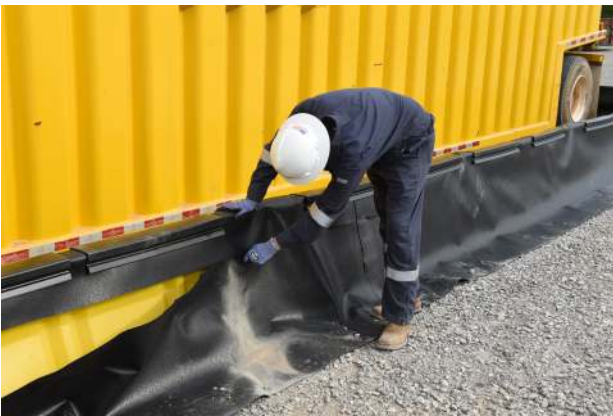
9. Carefully drive/roll container (frac tank, etc) into Containment Wall system.



10. Once truck and/or any other equipment that will not be contained is removed, replace any walls/corners that were removed in step 6.



11. Place clips (two per wall / one per corner) over liner to secure it in place. (NOTE: The clips are designed to fit snugly and may require a fair amount of force to install. A rubber mallet can be helpful).



12. OPTIONAL: If desired, any excess liner material can be trimmed using a sharp utility knife.



13. Your installation/assembly is now complete. The Containment Wall System should be inspected periodically for any leaks or damage.