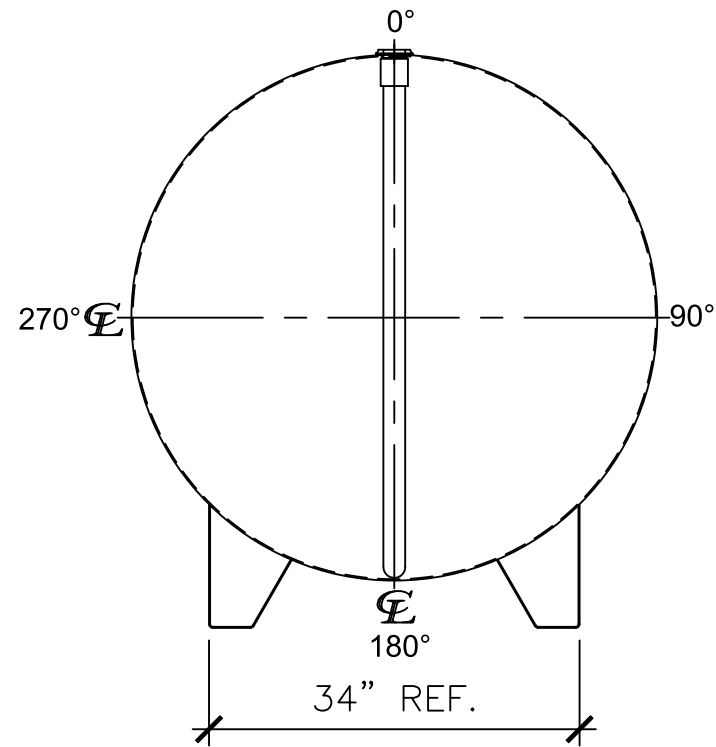
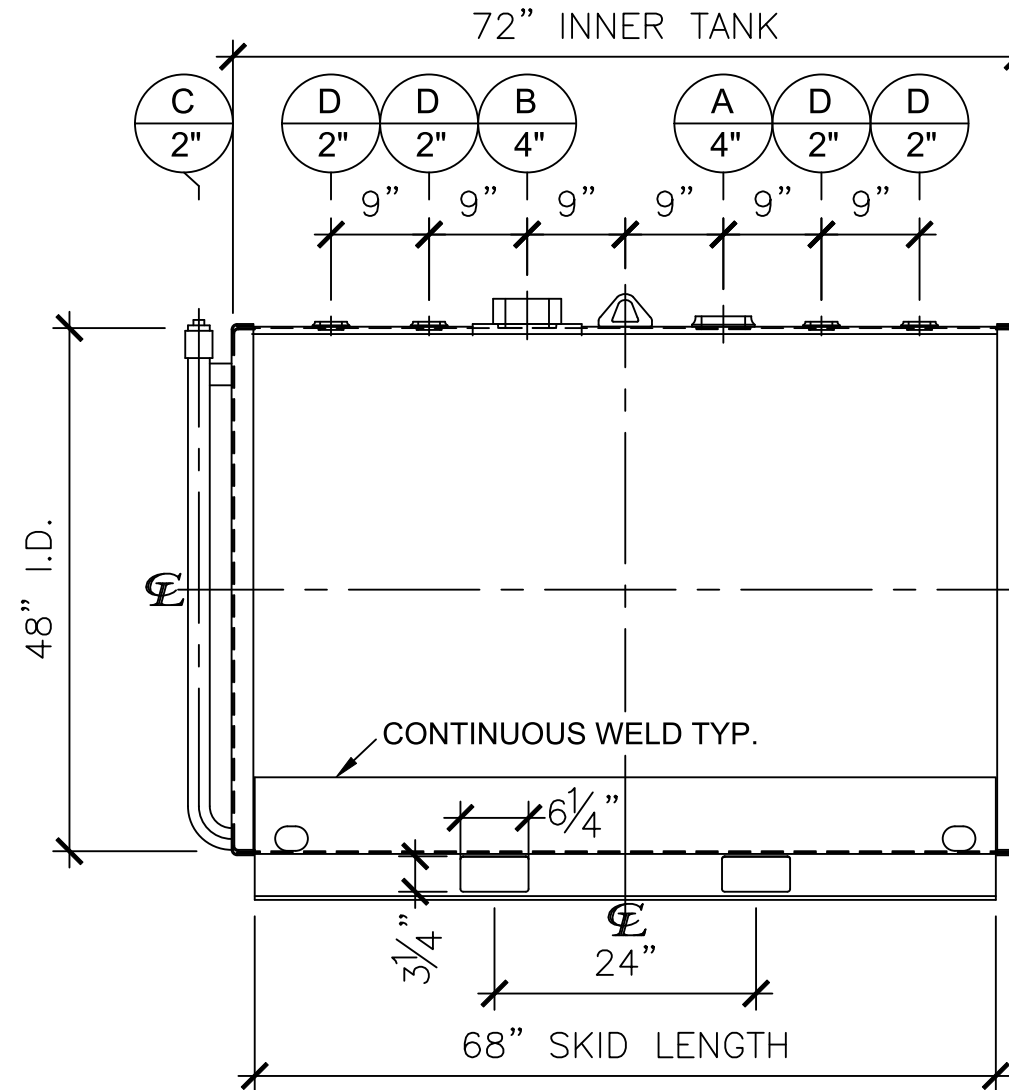


## NOZZLE SCHEDULE

ITEM	SIZE	RATING	TYPE	MATL	REMARKS	NOTES
A	4"	N.P.T.	W.F.	C.S.	PRIMARY	EMERGENCY VENT OPENING
B	4"	N.P.T.	H.CPL.	C.S.	SECONDARY	EMERGENCY VENT OPENING
C	2"	N.P.T.	PIPE	C.S.	-	INTERSTICE MONITOR
D	2"	N.P.T.	W.F.	C.S.	-	-



LEFT SIDE



FRONT VIEW

**NOTES:**

- A. Material: H.R. Carbon Steel.
- B. Design Pressure: Atmospheric.
- C. Design Temperature: Ambient.
- D. Built & labeled per U.L. spec. #142.
- E. Exterior: Gray primer included; see Sales Order for top coat.
- F. All fittings to be protected for shipment.
- G. Customer to verify nozzle sizes, locations, and quantities.
- H. Saddles/skids may require shimming or grouting during installation.

<p style="text-align: center; font-size: small;">APPROVAL FOR CONSTRUCTION SCHEDULE A - MASTER TERMS &amp; CONDITION OF SALE</p> <p><input type="checkbox"/> APPROVED AS DRAWN.</p> <p><input type="checkbox"/> APPROVED WITH NOTED CHANGES. CONSTRUCTION WILL BE SCHEDULED WHEN SIGNED DRAWING AND CONFIRMED ORDER ARE RECEIVED.</p> <p>SIGNATURE: _____</p> <p>DATE: _____</p>	<p><b>SALES ORDER:</b></p> <p style="text-align: center;"><b>ONE</b> CLARION</p> <p style="text-align: center;">www.clarionmunicipal.com</p> <p>DESCRIPTION: <b>550 GALLON 48" I.D. x 6'-0" O.A.L. DOUBLE WALL SKID TANK</b></p> <p>CUSTOMER: _____ P.O.# _____</p> <p>DATE: 06/07/23 SCALE: _____ DWG.# NB00550DWS04812G DRAWN BY: WR</p>	<p>WEIGHT (LBS): 1450</p> <p style="font-size: x-small; text-align: right;">All units inches unless stated otherwise</p> <p style="text-align: right;">SHEET 1 OF 1</p>
--	--	---