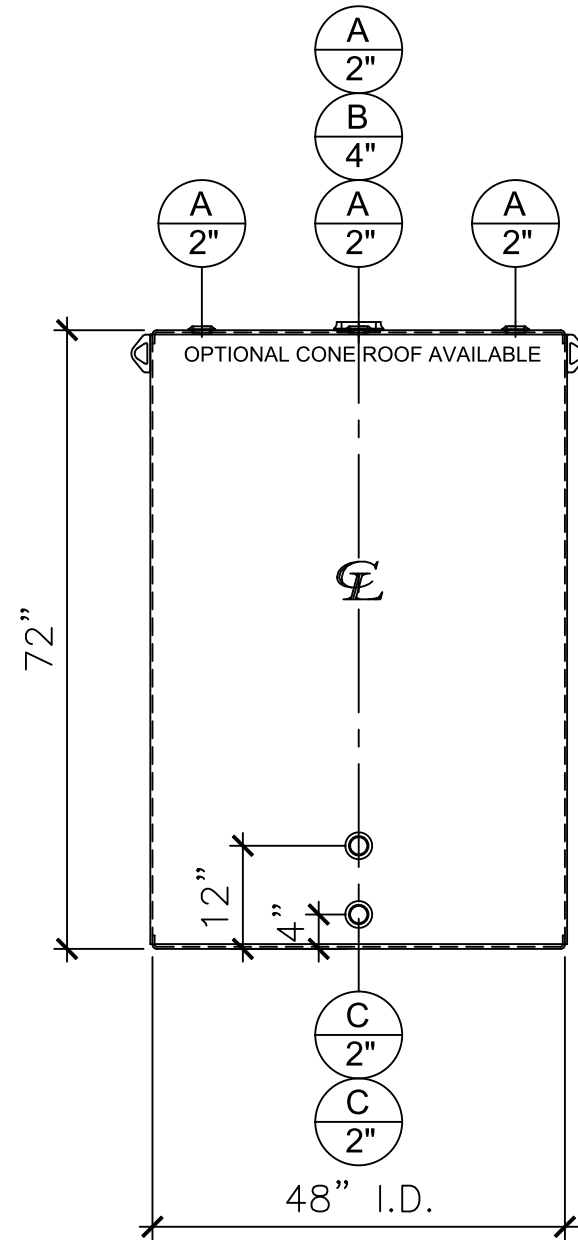
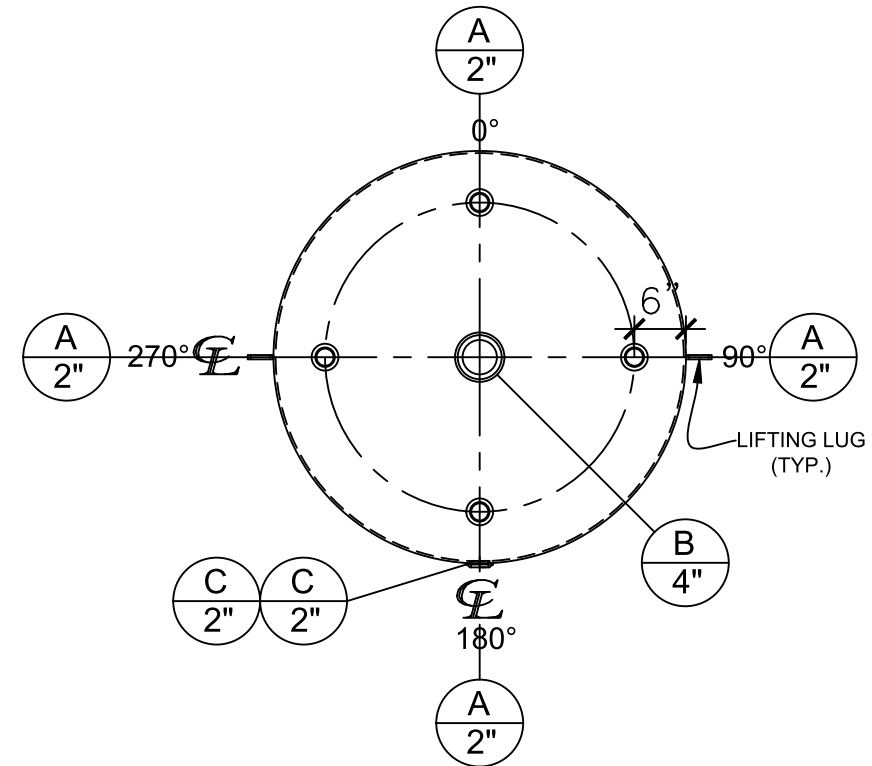


NOZZLE SCHEDULE

ITEM	SIZE	RATING	TYPE	MATL	PROJ. IN	PROJ. OUT	REMARKS	NOTES
A	2"	N.P.T.	W.F.	C.S.	STD.	STD.	-	-
B	4"	N.P.T.	H.CPL.	C.S.	STD.	STD.	-	EMERGENCY VENT OPENING
C	2"	N.P.T.	W.F.	C.S.	STD.	STD.	-	-



FRONT VIEW



PLAN VIEW

NOTES:

- A. Material: H.R. Carbon Steel.
- B. Design Pressure: Atmospheric.
- C. Design Temperature: Ambient.
- D. Built & labeled per U.L. spec. #142.
- E. Exterior: Gray primer included; see Sales Order for top coat.
- F. All fittings to be protected for shipment.
- G. Customer to verify nozzle sizes, locations and quantities.

APPROVAL FOR CONSTRUCTION SCHEDULE A - MASTER TERMS & CONDITION OF SALE*			SALES ORDER:-		WEIGHT (LBS): 750
<input type="checkbox"/> APPROVED AS DRAWN. <input type="checkbox"/> APPROVED WITH NOTED CHANGES, CONSTRUCTION WILL BE SCHEDULED WHEN SIGNED DRAWING AND CONFIRMED ORDER ARE RECEIVED.			 www.clarionmunicipal.com		
SIGNATURE: _____			DESCRIPTION:		
DATE: _____			550 Gallon 48" I.D. x 6'-0" Shell Height Single Wall Vertical Tank		
CUSTOMER:		P.O.#			
DATE: 4/6/2023	SCALE:	DWG.# NB00550SWV04812G	DRAWN BY: AJC		
			SHEET 1 OF 1		