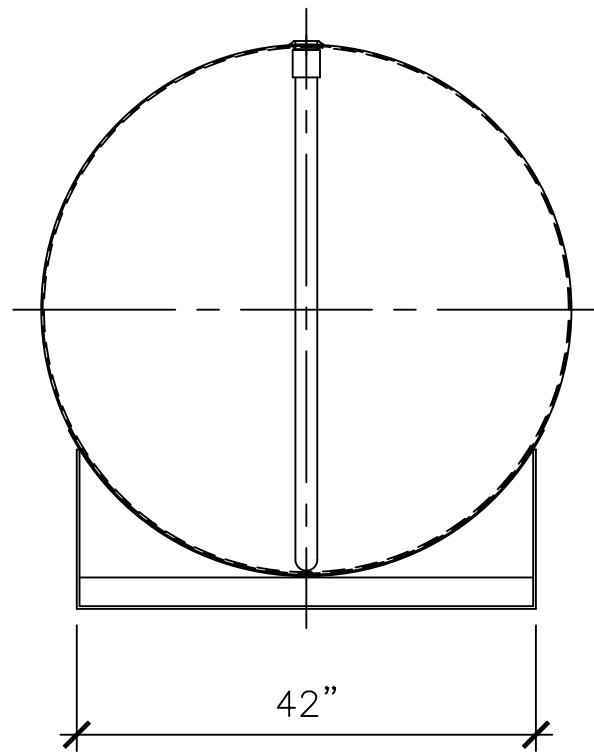
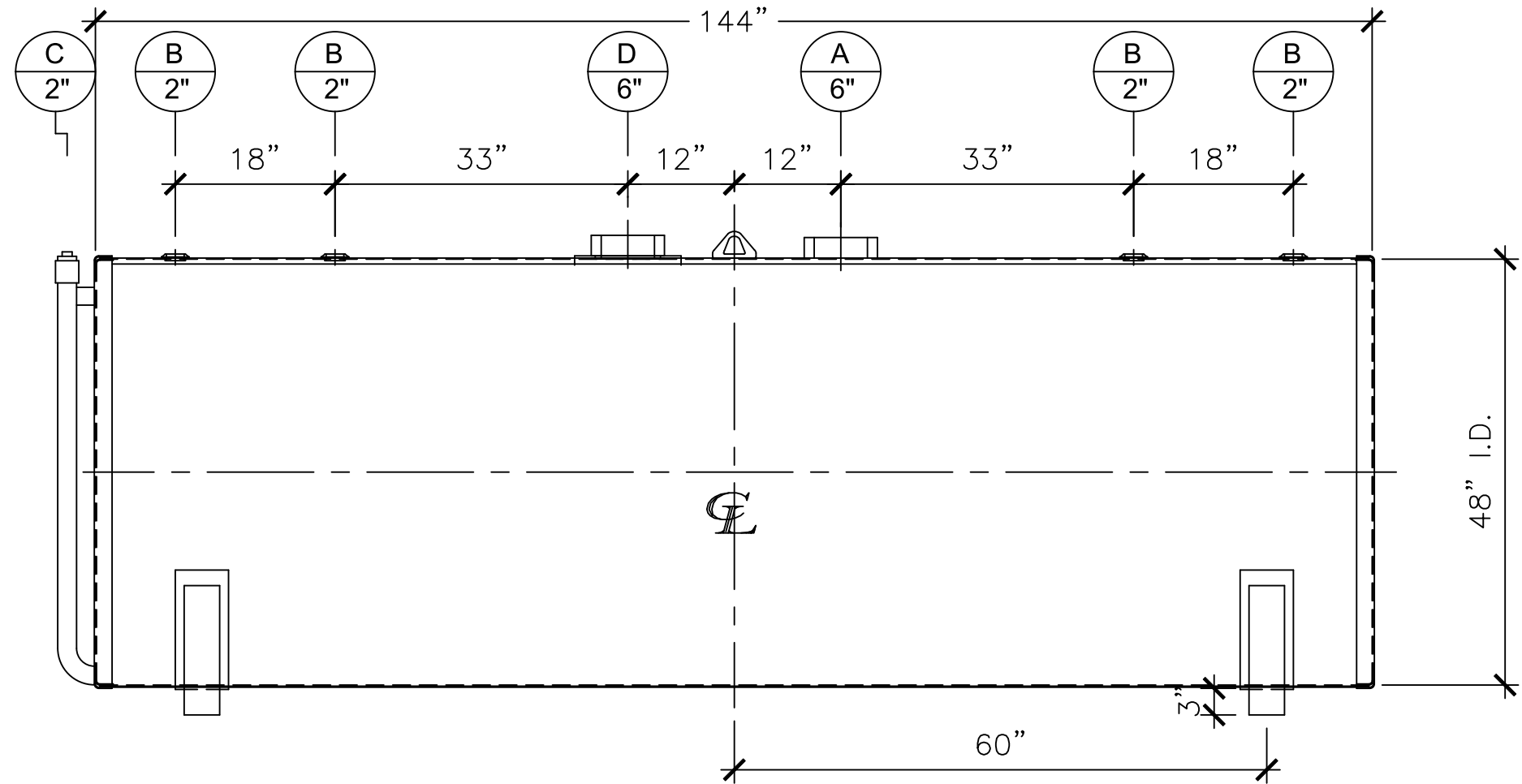


NOZZLE SCHEDULE

ITEM	SIZE	RATING	TYPE	MATL	REMARKS	NOTES
A	6"	N.P.T.	H.CPL.	C.S.	PRIMARY	EMERGENCY VENT OPENING
B	2"	N.P.T.	W.F.	C.S.	-	-
C	2"	N.P.T.	PIPE	C.S.	-	INTERSTICE MONITOR
D	6"	N.P.T.	H.CPL.	C.S.	SECONDARY	EMERGENCY VENT OPENING



LEFT SIDE



FRONT VIEW

NOTES:

- A. Material: H.R. Carbon Steel.
- B. Design Pressure: Atmospheric.
- C. Design Temperature: Ambient.
- D. Built & Labeled per U.L. Spec. #142.
- E. Exterior: Gray primer included; see Sales Order for top coat.
- F. All Fittings to be protected for shipment.
- G. Customer to verify nozzle sizes, locations, and quantities.
- H. Saddles/skids may require shimming or grouting during installation.

APPROVAL FOR CONSTRUCTION SCHEDULE A - MASTER TERMS & CONDITION OF SALE* <input type="checkbox"/> APPROVED AS DRAWN. <input type="checkbox"/> APPROVED WITH NOTED CHANGES, CONSTRUCTION WILL BE SCHEDULED WHEN SIGNED DRAWING AND CONFIRMED ORDER ARE RECEIVED. SIGNATURE: _____ DATE: _____		SALES ORDER: - www.clarionmunicipal.com DESCRIPTION: 1100 GALLON 48" I.D. X 12'-0" O.A.L. DOUBLE WALL BRACKET TANK CUSTOMER: _____ P.O.#: _____ DATE: 03/14/23 SCALE: _____ DWG.#: NB01100DWB04810G DRAWN BY: WR SHEET 1 OF 1	WEIGHT (LBS): 2150 All units inches unless stated otherwise
---	--	---	--