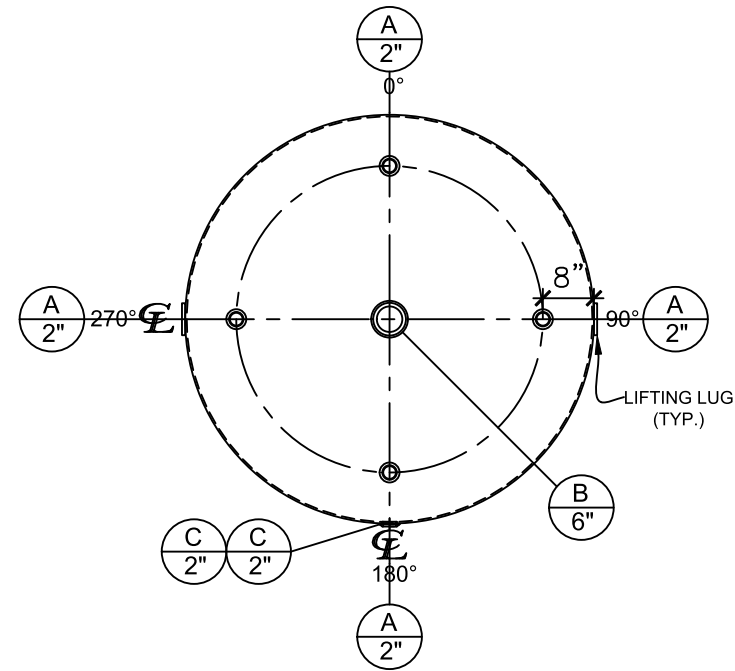


FRONT VIEW

NOZZLE SCHEDULE								
ITEM	SIZE	RATING	TYPE	MATL	PROJ. IN	PROJ. OUT	REMARKS	NOTES
A	2"	N.P.T.	CPL.	C.S.	STD.	STD.	-	-
B	6"	N.P.T.	H.CPL.	C.S.	STD.	STD.	-	EMERGENCY VENT OPENING
C	2"	N.P.T.	W.F.	C.S.	STD.	STD.	-	-



PLAN VIEW

NOTES:

- A. Material: H.R. Carbon Steel.
- B. Design Pressure: Atmospheric.
- C. Design Temperature: Ambient.
- D. Built & labeled per U.L. spec. #142.
- E. Exterior: One coat gray primer. See sales order for top coat.
- F. All fittings to be protected for shipment.
- G. Customer to verify nozzle sizes, locations and quantities.

APPROVAL FOR CONSTRUCTION SCHEDULE A - MASTER TERMS & CONDITION OF SALE			SALES ORDER:-		WEIGHT (LBS): 2200
<input type="checkbox"/> APPROVED AS DRAWN.					All units inches unless stated otherwise
<input type="checkbox"/> APPROVED WITH NOTED CHANGES. CONSTRUCTION WILL BE SCHEDULED WHEN SIGNED DRAWING AND CONFIRMED ORDER ARE RECEIVED.			www.clarionmunicipal.com		
SIGNATURE: _____ DATE: _____			DESCRIPTION: 2000 Gallon 64" I.D. x 12'-0" Shell Height Single Wall Vertical Tank		
CUSTOMER:				P.O.#	
DATE: 4/6/2023	SCALE:	DWG.# NB02000SWV06407G	DRAWN BY: AJC SHEET 1 OF 1		