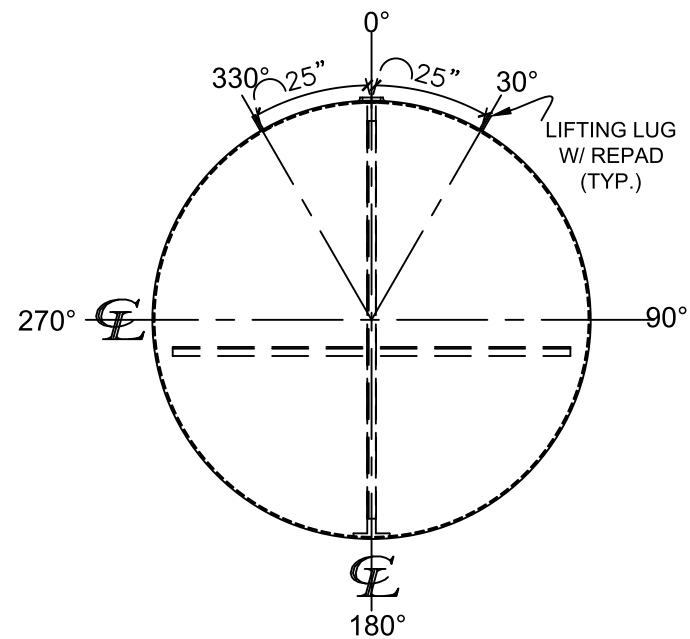
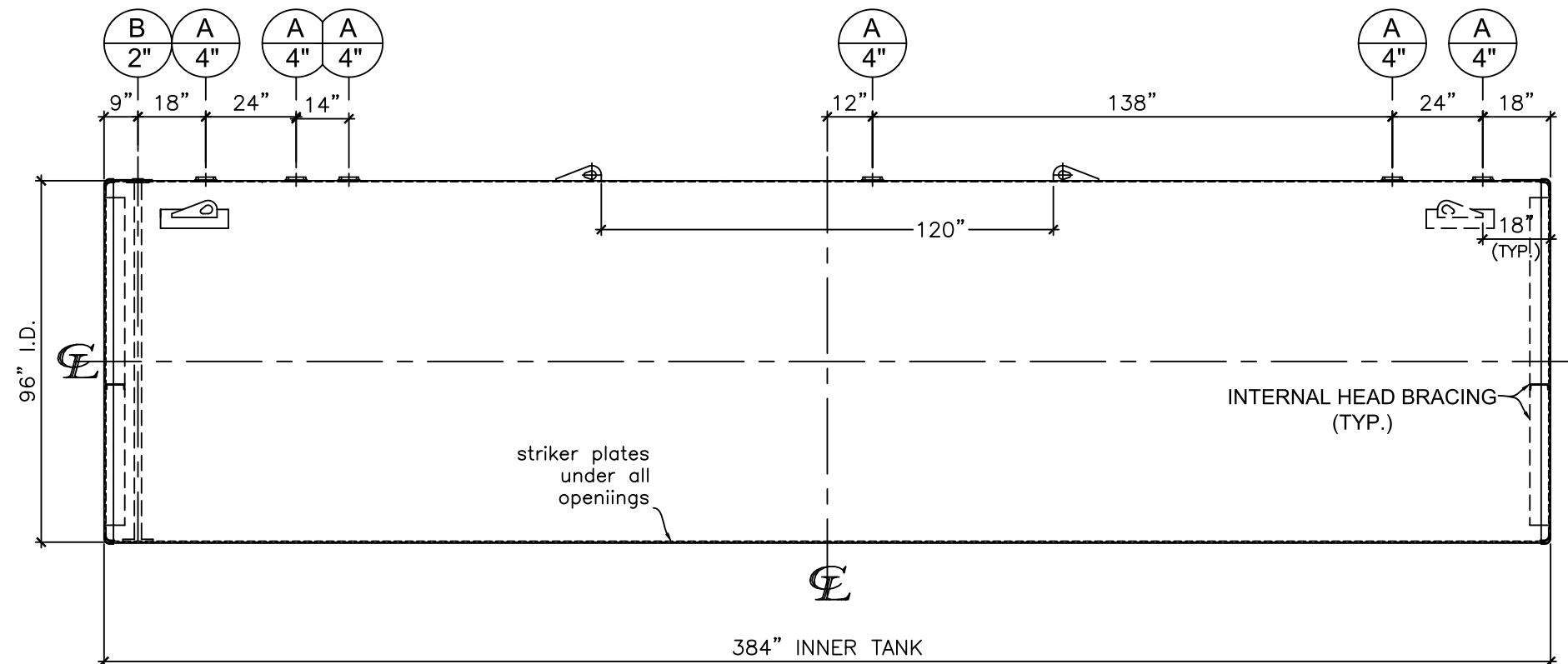


**NOZZLE SCHEDULE**

| ITEM | SIZE | RATING | TYPE | MATL. | PROJ. IN | PROJ. OUT | REMARKS | NOTES           |
|------|------|--------|------|-------|----------|-----------|---------|-----------------|
| A    | 4"   | N.P.T. | W.F. | C.S.  | STD.     | STD.      | -       | -               |
| B    | 2"   | N.P.T. | M.F. | C.S.  | STD.     | STD.      | -       | MONITORING PORT |



LEFT SIDE



FRONT VIEW

**NOTES:**

- A. Quantity:
- B. Material: H.R. Carbon Steel.
- C. Design Pressure: Atmospheric.
- D. Design Temperature: Ambient.
- E. Built & labeled per U.L. #58, UL 1746 and ACT100 specs.
- F. Exterior: Blast & apply min. 100 mils DFT Fiberglass.
- G. Seal welded striker plates under all openings.
- H. All fittings to be protected for shipment.
- I. Customer to verify nozzle sizes, locations and quantities.

\*All pages of this Schedule A are incorporated by reference and are a part of the additional terms of the Master Terms & Conditions of Sale.

|   |        |   |                           |                      |  |
|---|--------|---|---------------------------|----------------------|--|
| APPROVAL FOR CONSTRUCTION<br>SCHEDULE A - MASTER TERMS &<br>CONDITION OF SALE*  |        | SALES ORDER: -  |                           | WEIGHT (LBS): 17,639 |  |
| <input type="checkbox"/> APPROVED AS DRAWN.   |        | www.clarionmunicipal.com  |                           |                      |  |
| <input type="checkbox"/> APPROVED WITH NOTED CHANGES.<br>CONSTRUCTION WILL BE SCHEDULED<br>WHEN SIGNED DRAWING AND<br>CONFIRMED ORDER ARE RECEIVED. |        |   |                           |                      |  |
| SIGNATURE: _____  |        | DESCRIPTION:<br>12,000 Gallon 96" I.D. x 32'-0" O.A.L. Double Wall ACT-100 Tank |                           |                      |  |
| DATE: _____   |        | CUSTOMER:   |                           | P.O.#                |  |
| DATE:<br>10/10/2022   | SCALE: | DWG.#<br>NB12000DWA096250   | DRAWN BY:<br>SHEET 1 OF 1 |                      |  |