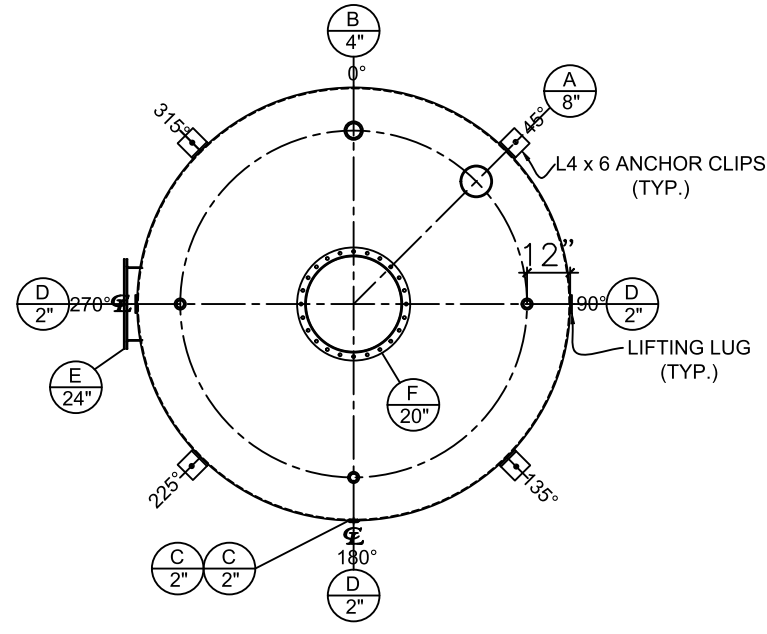


FRONT VIEW


NOZZLE SCHEDULE								
ITEM	SIZE	RATING	TYPE	MATL	PROJ. IN	PROJ. OUT	REMARKS	NOTES
A	8"	N.P.T.	H. CPL.	C.S.	STD.	STD.	-	EMERGENCY VENT OPENING
B	4"	N.P.T.	CPL.	C.S.	STD.	STD.	-	-
C	2"	N.P.T.	W.F.	C.S.	STD.	STD.	-	-
D	2"	N.P.T.	CPL.	C.S.	STD.	STD.	-	-
E	24"	N.P.T.	MANWAY	C.S.	STD.	STD.	TIGHT BOLTED	DOUBLE PUNCHED
F	20"	N.P.T.	MANWAY	C.S.	STD.	STD.	TIGHT BOLTED	SINGLE PUNCHED



PLAN VIEW

NOTES:

- A. Material: H.R. Carbon Steel.
- B. Design Pressure: Atmospheric.
- C. Design Temperature: Ambient.
- D. Built & labeled per U.L. spec. #142.
- E. Exterior: one coat gray primer.
- F. All fittings to be protected for shipment.
- G. Customer to verify nozzle sizes, locations and quantities.

APPROVAL FOR CONSTRUCTION SCHEDULE A - MASTER TERMS & CONDITION OF SALE*		SALES ORDER:-		WEIGHT (LBS): 11750
<input type="checkbox"/> APPROVED AS DRAWN.		 www.clarionmunicipal.com		
<input type="checkbox"/> APPROVED WITH NOTED CHANGES. CONSTRUCTION WILL BE SCHEDULED WHEN SIGNED DRAWING AND CONFIRMED ORDER ARE RECEIVED.		DESCRIPTION: 15,000 Gallon 120" I.D. x 26'-0" Shell Height Single Wall Vertical Tank		
SIGNATURE: _____ DATE: _____		CUSTOMER: _____		P.O.# _____
DATE: 4/6/2023	SCALE: _____	DWG.# NB15000SWV120250	DRAWN BY: AJC SHEET 1 OF 1	