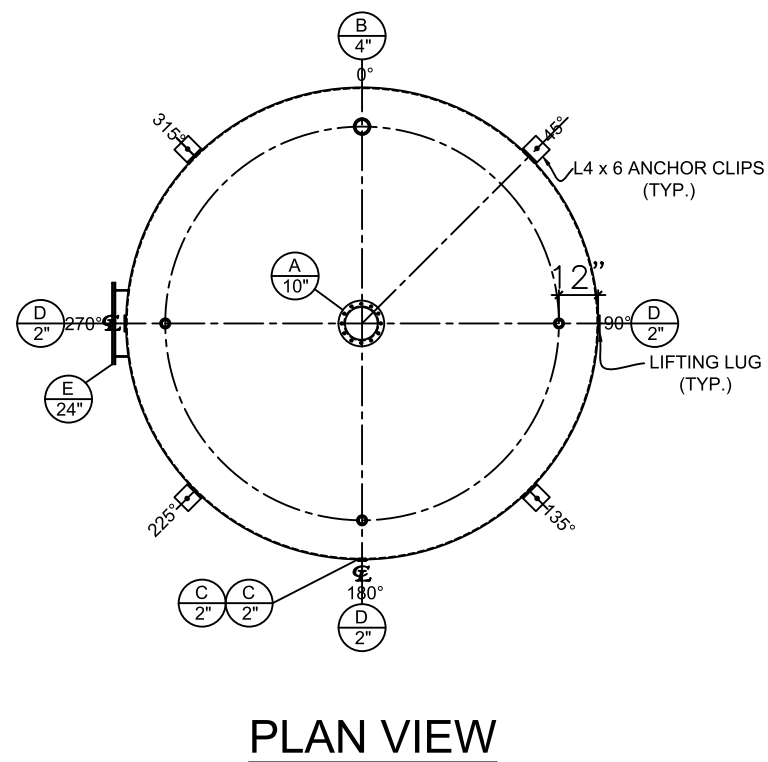


NOZZLE SCHEDULE								
ITEM	SIZE	RATING	TYPE	MATL	PROJ. IN	PROJ. OUT	REMARKS	NOTES
A	10"	N.P.T.	FLANGED	C.S.	STD.	STD.	PRIMARY	10" FLANGED EMERGENCY VENT OPENING
B	4"	N.P.T.	CPL.	C.S.	STD.	STD.	-	-
C	2"	N.P.T.	W.F.	C.S.	STD.	STD.	-	-
D	2"	N.P.T.	CPL.	C.S.	STD.	STD.	-	-
E	24"	N.P.T.	MANWAY	C.S.	STD.	STD.	TIGHT BOLTED	DOUBLE PUNCHED



NOTES:

- A. Material: H.R. Carbon Steel.
- B. Design Pressure: Atmospheric.
- C. Design Temperature: Ambient.
- D. Built & labeled per U.L. spec. #142.
- E. Exterior: One coat gray primer. See sales order for top coat.
- F. All fittings to be protected for shipment.
- G. Customer to verify nozzle sizes, locations and quantities.

APPROVAL FOR CONSTRUCTION SCHEDULE A - MASTER TERMS & CONDITION OF SALE*		SALES ORDER:-		WEIGHT (LBS): 14000
<input type="checkbox"/> APPROVED AS DRAWN.		 www.clarionmunicipal.com		
<input type="checkbox"/> APPROVED WITH NOTED CHANGES. CONSTRUCTION WILL BE SCHEDULED WHEN SIGNED DRAWING AND CONFIRMED ORDER ARE RECEIVED.		DESCRIPTION: 20,000 Gallon 144" I.D. x 24'-0" Shell Height Single Wall Vertical Tank		
SIGNATURE: _____ DATE: _____		CUSTOMER: _____		P.O.# _____
DATE: 4/6/2023	SCALE: _____	DWG.# NB20000SWV144250	DRAWN BY: AJC SHEET 1 OF 1	