



One Clarion Corrugated Water Tanks

Durable | Reliable | Affordable

These tanks are made for locations that experience little to light snow load, and are typically available at half the price of the competitors. Unlike other manufacturers that cut costs by offering lower grades of metal for tank panels, we use galvanized steel to ensure a long tank life. The tanks come with a polyethylene liner that's been tested and approved for safe drinking water storage (NSF 61).

Put 30+ years of making quality corrugated water tanks to work for you!

Appropriate for municipal, agricultural and industrial projects, our corrugated steel tanks are used for a variety of projects with a wide range of applications:

- Rainwater Collection
- Fire Water Storage
- Irrigation Water Storage
- Agriculture
- Drinking Water Storage
- Process Water Storage
- Bulk materials and dry goods
- Frac Storage Tanks



Durable | Reliable | Affordable

Since 1986, when we installed our very first Poly Lined Steel Water Tank, these tanks have set the standard in cost efficient large volume water tanks by designing and manufacturing tanks that are transported inexpensively anywhere in the world and assembled in a day in most cases by trained and qualified installers.



The Right Choice

One Clarion's range of Poly Lined Steel Water Tanks combine the proven durability and strength of corrugated galvanized steel with a safe and reliable polyethylene lining to create the most efficient and affordable large volume water tank available today.



Galvanized Walls

Today there are other suppliers of Poly Lined Steel Water Tanks, many claiming that GALVALUME® (aka ZINCALUME®) steel will outlast Galvanized materials in this application. Simply put, we know this is not true.



Polyethylene Liner

A tank liner is manufactured and tested in our state of the art manufacturing facility. Our solid Polyethylene liner has been tested and approved for the safe storage of drinking water in accordance with NSF 61.



Geotextile Underlay

Every water tank is supplied and fitted with a Geotextile Tank Liner Underlay which provides the ultimate protection against liner damage from imperfections in the tank base for the life of the tank.



Moisture Barrier

For added protection, we install a moisture barrier underneath the tank wall. Made from a durable and UV resistant geomembrane, the moisture barrier also assists to prevent base erosion and makes an excellent salt barrier.



Secure Access

A heavy duty 30" wide (40" across the diagonal) hinged lockable roof access hatch with removable ladder ensures safe access when needed and security against unwanted access.



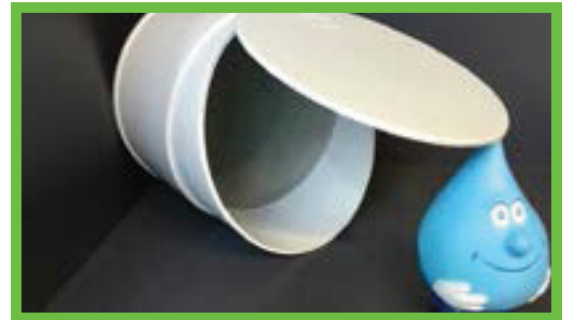
Light Proof Inlet

Large volume 20" Leaf Strainer Inlet includes a Light Guard which is placed under the inlet screen to prevent sunlight entering the tank providing a simple yet effective way to eliminate algae growth.



6" Overflow

6" Overflow assembly is fitted with an internal elbow to maximize storage capacity and the flap valve with mozzie proof screen ensures there is no access into the tank.



Removable Ladder

Light duty ladder hooks onto the tank wall via a specially designed ladder bracket installed under the access hatch. This means the ladder can be removed when not in use to prevent unwanted access. A second ladder bracket is installed under the roof inlet to provide safe access to the inlet strainer basket.



Roof Seal

By installing a specially formulated foam strip between the top of the tank wall & under the corrugated roof sheets, we protect your stored water from dust, frogs and most insects.



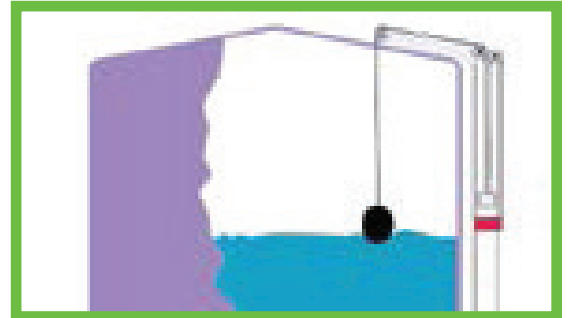
Rainsaver Gutter

These tanks offer a unique water catchment system for the roof of their water tank. Rainsaver caps are placed at the end of each roof sheet to redirect the rainwater into the tank harvesting thousands of gallons of precious rainwater that would otherwise go to waste.



Level Indicator

The 'Liquidator' Level Indicator was designed over 15 years ago and has proven itself to be the most simple, reliable and accurate water level gauge on the market.



Optional Facia

An optional facia can be installed around the perimeter of the roof to protect horses and other tall animals from cutting themselves on the edge of the roofing iron. It also enhances the appearance of your tank.



20 year warranty

Our 20 year 'No Service Costs' Pro-Rata Warranty leads the industry and is supported by over 30 years of experience choosing the right materials to survive the toughest of conditions.



Corrugated Tank Specifications

Gross Volume	Tank Diameter	Cistern Height	Details	
5,000 gal	10'7"	7'3"	Specs	Drawing
12,000 gal	17'1"	7'3"	Specs	Drawing
16,000 gal	17'1"	9'6"	Specs	Drawing
28,000 gal	25'7"	7'3"	Specs	Drawing
37,000 gal	25'7"	9'6"	Specs	Drawing
50,000 gal	34'2"	7'3"	Specs	Drawing
65,000 gal	34'2"	9'6"	Specs	Drawing
77,000 gal	42'8"	7'3"	Specs	Drawing
102,000 gal	42'8"	9'6"	Specs	Drawing

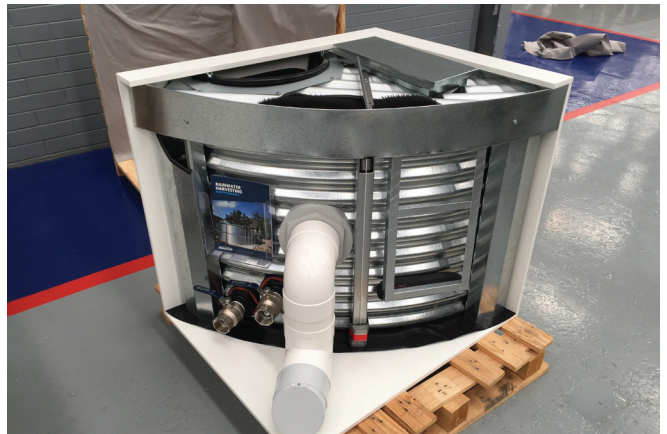
Roof Sheet Layout

	Type	Coverage	Tank Diameter	Details
5000 gallon	Full Length	32"	130"	Drawing
205" Diameter	Full Length	32"	205"	Drawing
307" Diameter	Full Length	32"	307"	Drawing
409" Diameter	Full Length	32"	409"	Drawing
409" Diameter	Short Length	32"	409"	Drawing
512" Diameter	Full Length	32"	512"	Drawing
512" Diameter	Short Length	32"	512"	Drawing



Standard Features

- G145 Galvanized Coated Corrugated Steel Walls
- NSF/ANSI 61 Certified for Potable Water Use Tank Liner
- Hot Dip Galvanized Roof Structure & Corrugated Dome Roof
- 2 Outlet with Nickel Coated Metal Ball Valve
- 2 Drain with Nickel Coated Metal Ball Valve
- 6 Overflow with Mosquito Screen and Flap Valve
- 20 Inlet Strainer Basket with UV Guard
- Geomat Cushion Layer Tank Liner Protection
- Tank Wall Moisture Barrier
- "Liquidator" Mechanical Level Gauge
- Foam Roof Seal for Dust and Vermin Protection
- Decorative Bolt Facia
- 30 Lockable Hinged Access Hatch with Removable Ladder



Configuration Options

- NFPA-"Fire Suppression"
- Well Storage
- Rain Harvesting

**These tanks can withstand high wind and seismic activity. Their design is not appropriate for use in situations with significant snow load however. Please see the specifications below for more information. In the case of locations with a sizeable snow load, we have other options available for you. Please ask us.*



Satisfies Code Requirements

Like any steel building structure, our water tanks are designed to loading, concrete and steel structure codes.

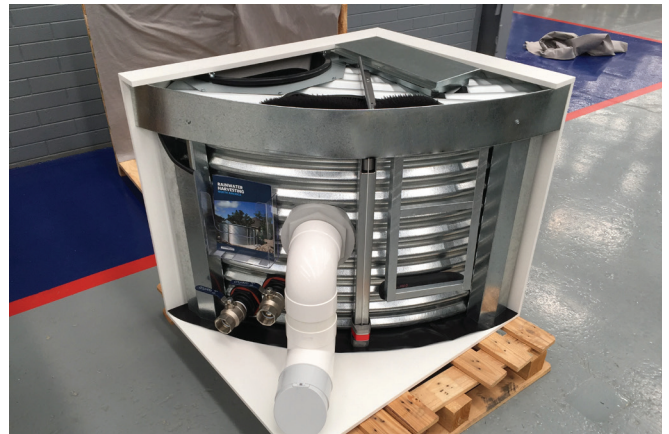
- ASCE7-10 Minimum Design Loads For Buildings and Other Structures
- ACI318-14 Building Code Requirements for Structural Concrete
- AISC 360-10 Specification for Structural Steel Buildings
- AISI100-07 North American Specification for the Design of Cold-Formed Steel Structural Members
- AWS D1.1 Structural Welding-Steel
- NSF/ANSI 61: Drinking Water System Components

Downloads:

[Sample Installation Guide](#)

[Site Preparation](#)

[Concrete Ring Beam Drawing](#)



For more complete information on One Clarion products and solutions, visit us on the web at: www.clarionmunicipal.com or call us at : [\(+1\) 863-261-8388](tel:+18632618388) | info@oneclarion.com

© 2024 One Clarion. All rights reserved. One Clarion terms and conditions apply.

