

# ULTRA- **SIDEWINDER** CABLE PROTECTION SYSTEMS

Protect Cords And Cables And Avoid Dangerous Tripping Hazards

Articulating pieces offer flexible design - curves, corners and s-curves are easily made while maintaining a completely flat profile.

Modular design makes it easy to reconfigure, repair, and replace targeted segments, even while the cable remains connected.

Simple installation - no tools required.

Fully customizable length

Sold by:  
**ONE**  
CLARION

NOW AVAILABLE IN

SMALL

MEDIUM

AND LARGE!



**ULTRATECH**  
INTERNATIONAL, INC.

U.S. Patent No. 8,168,888

[www.oneclarion.com](http://www.oneclarion.com) | 863-261-8388 | [info@oneclarion.com](mailto:info@oneclarion.com)

# FEATURES & BENEFITS

## ARTICULATION

The Ultra-Sidewinder's design articulates left and right—allowing the system to turn corners and adapt to the layout of the room, while maintaining full protection for the cables and trip protection for pedestrians. This flexible design allows curves, corners and s-curves to be easily made while maintaining a completely flat profile.



## AFFORDABLE

The Ultra-Sidewinder provides a cable protection system that is cost effective and economical enough to allow you to outfit your entire facility. Our superior design allows us to provide the same protection as other cable covers for less.



## CUSTOMIZABLE LENGTH

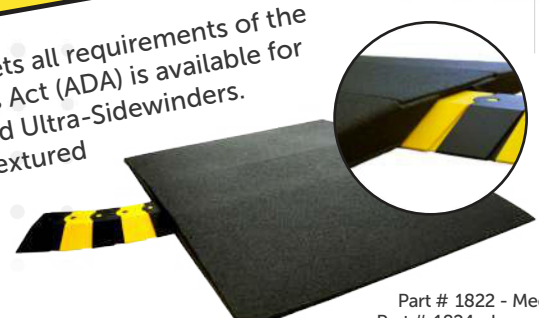
Ultra-Sidewinders come in standard lengths but because of the modular design and segmented construction, custom lengths can be created for any application — from 1.5 inches to an unlimited length with the large size.



Simply slide and click to connect additional segments- no tools required

## ADA COMPLIANT RAMP

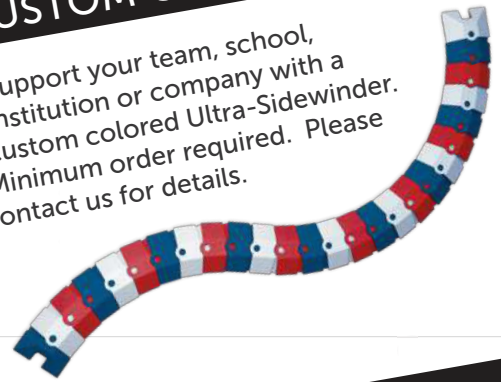
An optional ramp that meets all requirements of the Americans with Disabilities Act (ADA) is available for the medium and large sized Ultra-Sidewinders. Simply place the durable textured polymer, non-skid surface ramp on top of installed Ultra-Sidewinder.



Part # 1822 - Medium  
Part # 1824 - Large

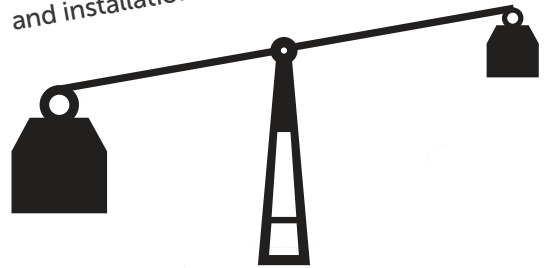
## CUSTOM COLORS

Support your team, school, institution or company with a custom colored Ultra-Sidewinder. Minimum order required. Please contact us for details.



## LIGHT WEIGHT

ABS plastic and superior design allow the Ultra-Sidewinder to be light weight. Saves on shipping and makes handling, assembly, and installation easier on personnel.



## DRIVE OVER CAPABILITY

Support ribs under the Ultra-Sidewinder provide outstanding weight bearing capacity allowing for vehicles to safely drive over cords, hoses, and cables.\*



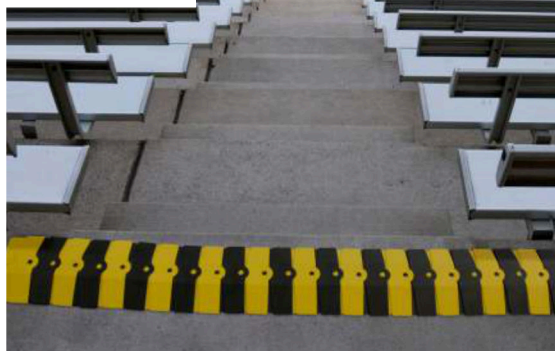
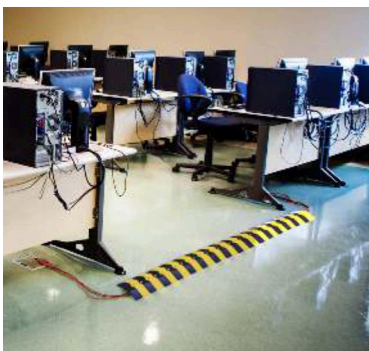
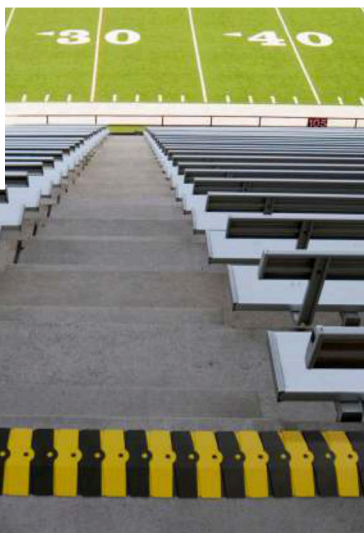
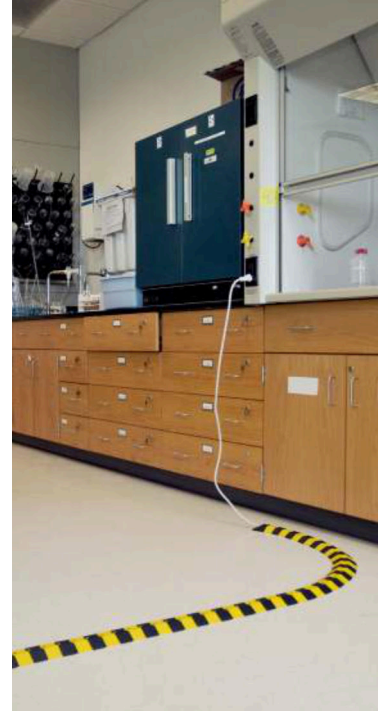
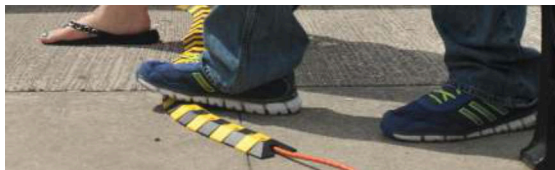
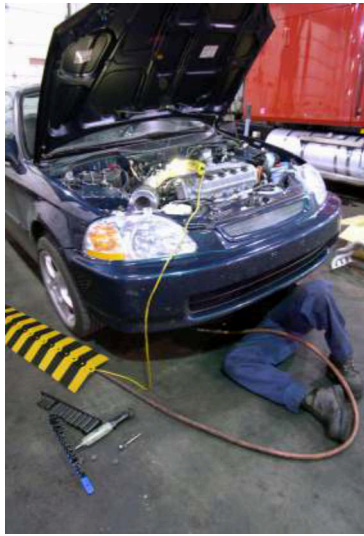
\*For use with vehicles with pneumatic tires only. Steel or solid rubber tires may cause damage.

## REGULATIONS

The Ultra-Sidewinder helps meet OSHA regulations: 29 CFR 1910.304 • 29 CFR 1910.305 and also satisfies the National Electrical Code - Section 525.6. Visit us at [www.ultrasidewinder.com](http://www.ultrasidewinder.com) for more details.









# SMALL

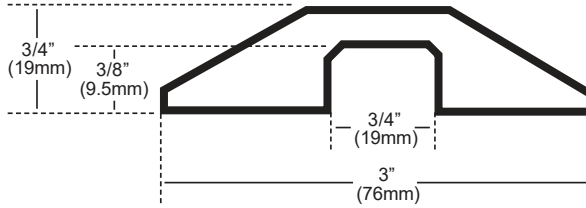


Also available in black, brown, and gray.



Coil for storage or easy portability and transport.

**1** Extension Cord  
3/8" (9.5mm)



| Ultra-Sidewinder®Small  |       |       |      |
|---|-------|-------|------|
| Load Capacity: 2,000 lbs./in <sup>2</sup> (140.6 kg./cm <sup>2</sup> )<br>Load Capacity per axle: 32,000 lbs. (14,515 kg.)  |       |       |      |
| System with Endcaps<br>39.5" x 3" x 3/4" (1,003 mm x 76 mm x 19 mm)<br>Weight: 1.5 lbs. (0.7 kg)<br>Internal channel opening - 3/4"W x 3/8"H (19mm x 9.5mm)                     |       |       |      |
| Black & Yellow  | Black | Brown | Gray |
| 1800  | 1802  | 1804  | 1806 |
| Extension<br>131/8" x 3" x 3/4" (333 mm x 76 mm x 19 mm)<br>Weight: 0.5 lbs. (0.2 kg)<br>Internal channel opening - 3/4"W x 3/8"H (19mm x 9.5mm)                                |       |       |      |
| Black & Yellow  | Black | Brown | Gray |
| 1801  | 1803  | 1805  | 1807 |
| 24-Foot Bulk Box (includes two endcaps)<br>294" x 3" x 3/4" (7,468 mm x 76 mm x 19 mm)<br>Weight: 10.0 lbs. (4.5 kg)<br>Internal channel opening - 3/4"W x 3/8"H (19mm x 9.5mm) |       |       |      |
| Black & Yellow  |       |       |      |
| 1820  |       |       |      |

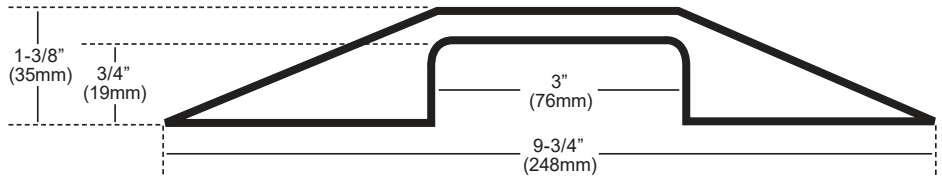
# MEDIUM



**18** Extension Cords  
3/8" (9.5mm)

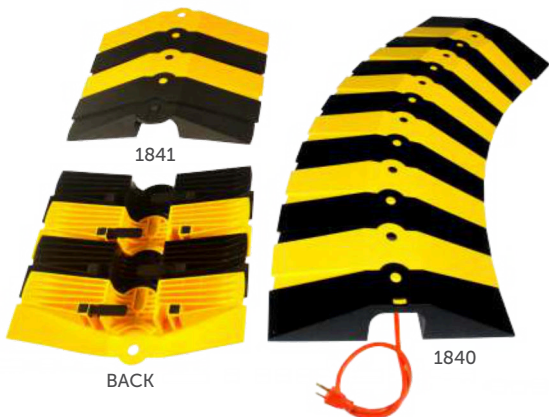
**4** Air Hoses  
3/4" (19mm)

**3** Garden Hoses  
5/8" (16mm)



| Ultra-Sidewinder®Medium   |       |
|---|-------|
| Load Capacity: 260 lbs./in <sup>2</sup> (18.3 kg./cm <sup>2</sup> )<br>Load Capacity per axle: 13,500 lbs. (6,123 kg.)                                    |       |
| System with Endcaps<br>33" x 9/4" x 1 1/2" (838 mm x 248 mm x 35 mm)<br>Weight: 6.0 lbs. (2.7 kg)<br>Internal channel opening - 3"W x 3/4"H (76mm x 19mm) |       |
| Black & Yellow  | Black |
| 1830  | 1832  |
| Extension<br>141/8" x 9/4" x 1 1/2" (358 mm x 248 mm x 35 mm)<br>Weight: 2.0 lbs. (0.9 kg)<br>Internal channel opening - 3"W x 3/4"H (76mm x 19mm)        |       |
| Black & Yellow  | Black |
| 1831  | 1833  |
| Part # 1822 - Optional ADA compliant Ultra-Sidewinder Ramp (Medium)   |       |

# LARGE

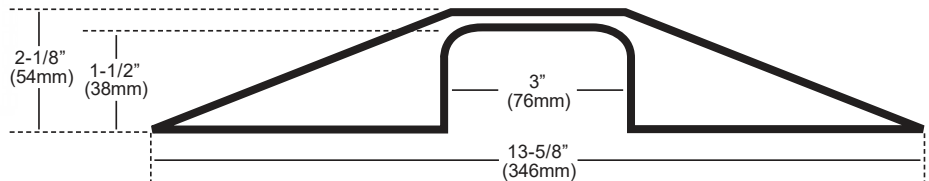


**32** Extension Cords  
3/8" (9.5mm)

**8** Air Hoses  
3/4" (19mm)

**3** Garden Hoses  
5/8" (16mm)

**MULT.** Large Industrial Cables  
5/8" - 1-1/2"  
(16mm - 38mm)



| Ultra-Sidewinder®Large  |       |
|---|-------|
| Load Capacity: 260 lbs./in <sup>2</sup> (18.3 kg./cm <sup>2</sup> )<br>Load Capacity per axle: 13,500 lbs. (6,123 kg.)  |       |
| System with Endcaps<br>34" x 13/4" x 2 1/4" (863 mm x 346 mm x 54 mm)<br>Weight: 13.5 lbs. (6.0 kg)<br>Internal channel opening - 3"W x 1 1/2"H (76mm x 38mm) |       |
| Black & Yellow  | Black |
| 1840  | 1842  |
| Extension<br>14 1/4" x 13/4" x 2 1/4" (358 mm x 346 mm x 54 mm)<br>Weight: 4.5 lbs. (2.0 kg)<br>Internal channel opening - 3"W x 1 1/2"H (76mm x 38mm)        |       |
| Black & Yellow  | Black |
| 1841  | 1843  |
| Part # 1824 - Optional ADA compliant Ultra-Sidewinder Ramp (Large)  |       |

Video available at [www.UltraSidewinder.com](http://www.UltraSidewinder.com)